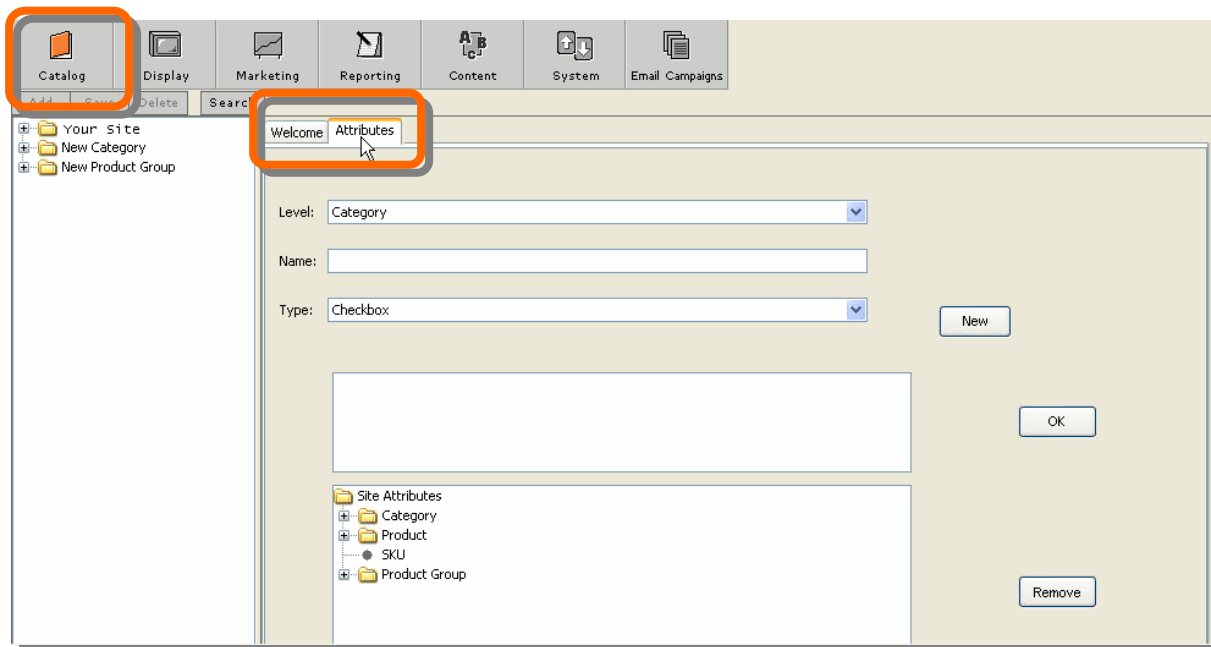
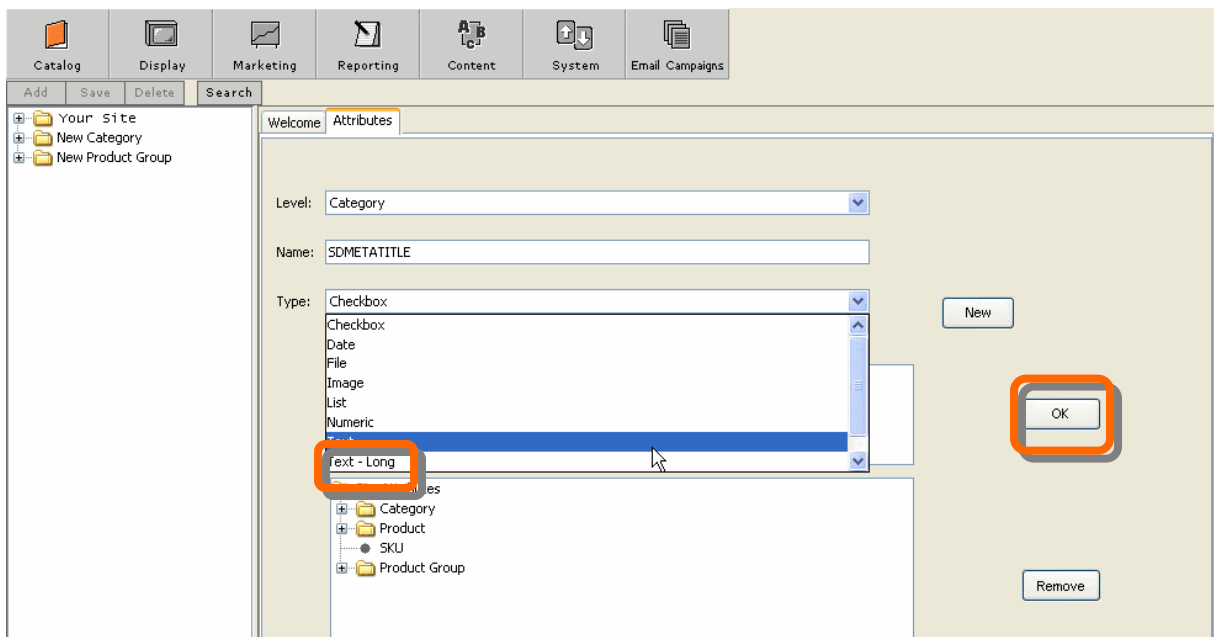


### 1) For MarketLive 3.5 Version users:

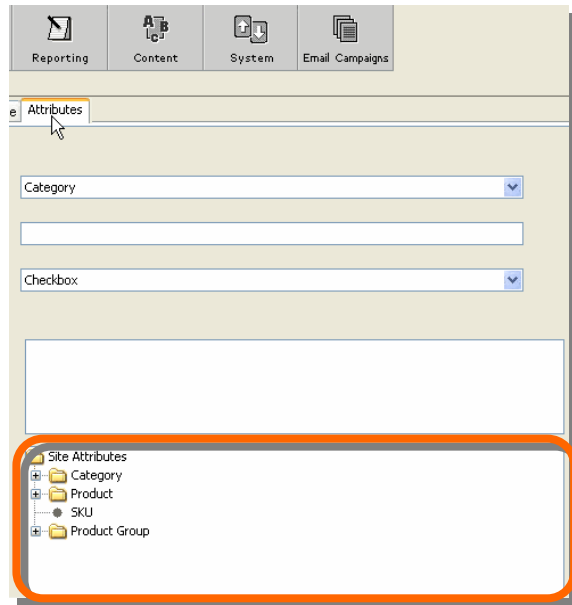
- a. After logging into the system, click on the **Catalog** tab at the top
- b. Next, click on **Site** in the directory on the left. Click on the **Attributes** tab on that page.



- d. For the "Level" Field, select "Category" from the drop-down menu

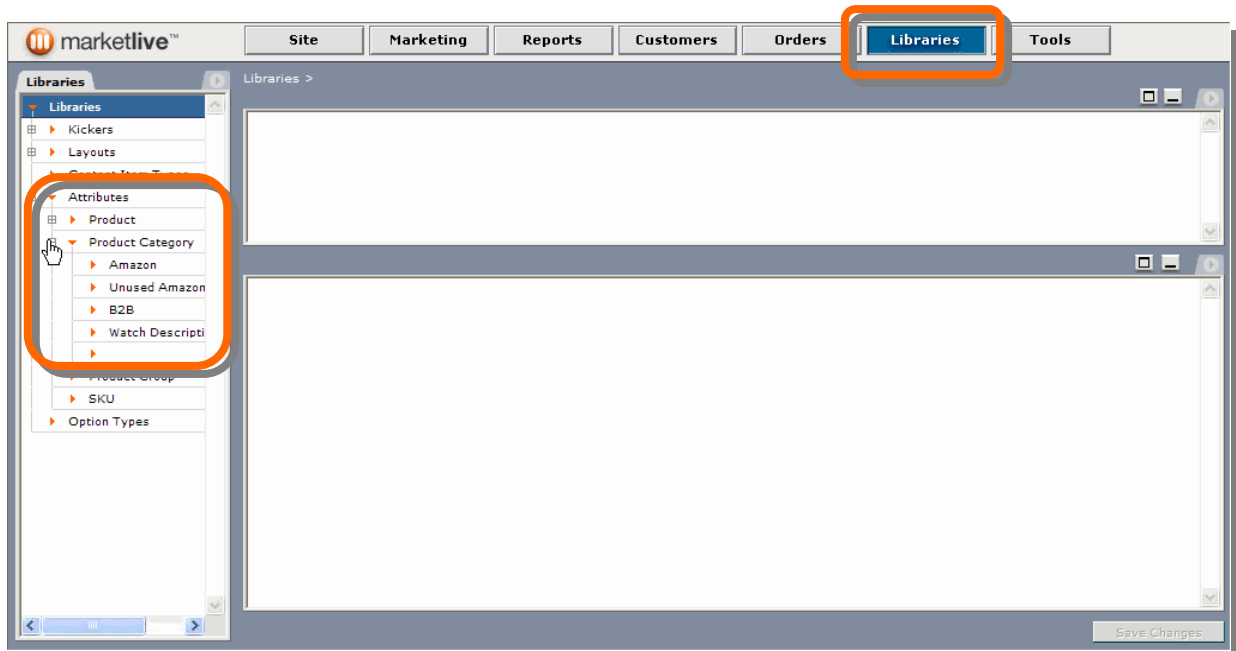


- f. In the "Name" field enter the name of attribute (e.g., SDPAGETITLE)
- g. Select "Text-Long" from the drop-down menu for "Type" field
- h. Click on the OK button and then open the Category folder in the display box below. You will see the name that you entered (i.e. SDPAGETITLE)

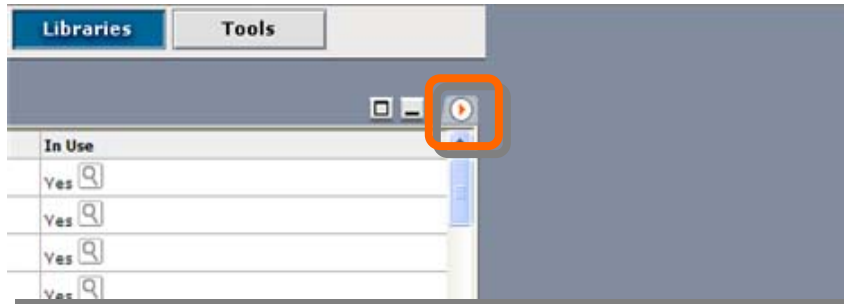


2) For MarketLive 4.0 Version users:

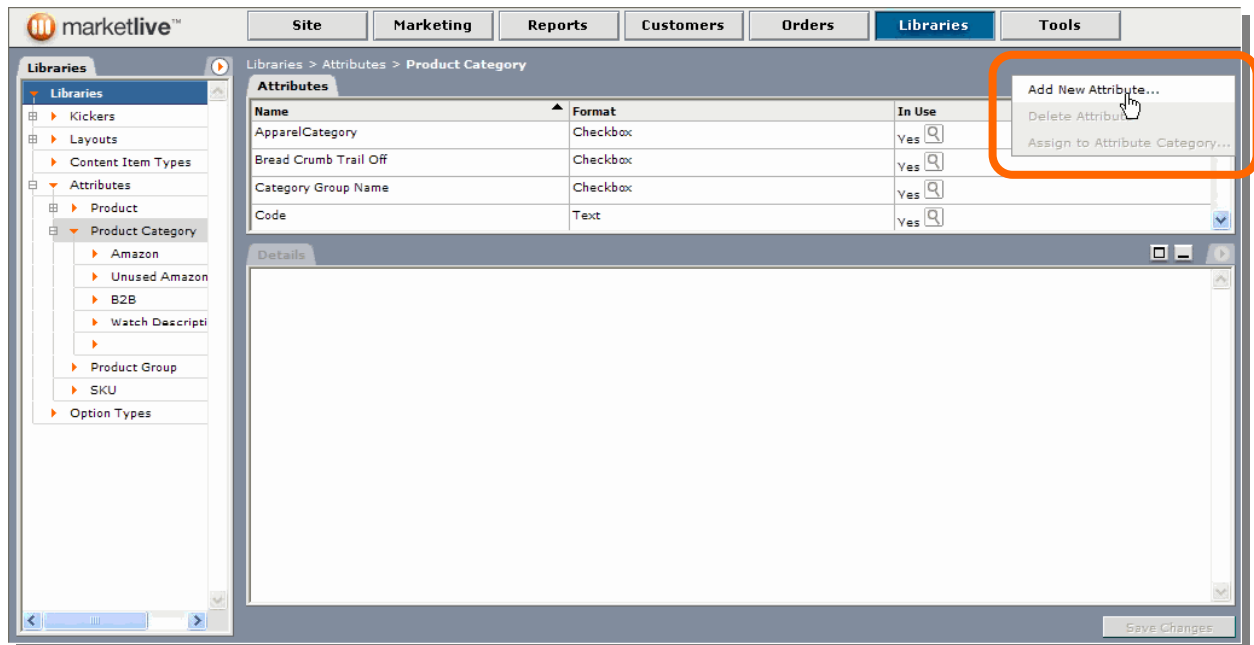
- a. After logging into the system, click on the **Libraries** tab at the top
- b. Next, in the Libraries directory on the left, drill down to Product Category



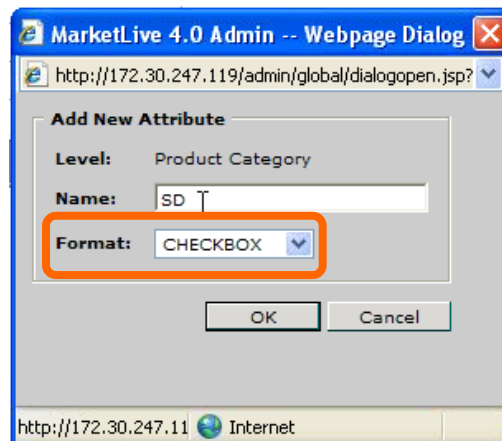
- c. Click on the Fly-Out menu icon in the upper right of the interface (looks like a little arrow pointing right)



- d. Select "Add New Attribute"



- e. In the Add New Attribute dialog box, enter the new attribute name (e.g., SDPAGECONTENT), and select the **Text** option in the Format field.



- f. Click on the OK button to save the new attribute. The attribute will now display in the Attributes tab window.